



Ambition - Community - Equality



# ELMS FARM PRIMARY SCHOOL NEWSLETTER

24<sup>th</sup> May 2024



ELMS FARM COMMUNITY PRIMARY SCHOOL

IS A 'GOOD' SCHOOL: OFSTED 2021



*Ruby says... Article 29 Your education should help you use and develop your talents and abilities*



### Half-term

A reminder that the school is closed next week for half-term.

**Pupils return to school on Monday 3<sup>rd</sup> June.**

We hope that you have a lovely break. The children have worked incredibly hard this half-term, as have the staff. I will be checking Class Dojo during the week but ask that you do not message teachers.

There is a lot happening in the final half-term of the academic year so please do check the key date calendar below for all of the key dates. A reminder that we cannot authorise in term holidays so please check the key dates-in Autumn term, Pupils return to school on **Wednesday 4<sup>th</sup> September.**

### **Polling Day-4<sup>th</sup> July**

You will have heard in the media that a general election has been called. We have received notification that the school will be used as a polling station. **We will therefore be closed on July 4<sup>th</sup> and offering remote learning.**

E Baxter  
Headteacher

### Class Attendance this week

Class	%	Days missed
Donaldson	89.6	12
Ahlberg	86.8	16
Cadbury	95.0	5.5
Seacole	92.3	7
O'Keeffe	89.0	15.5
Elgar	96.9	4
Newton	86.9	19
Hawking	97.2	3.5
Lewis	94.2	7
Simmonds	90.8	11
Shakespeare	87.9	14
Bloom	96.4	4
Duleep	95.8	6
Barnardo	92.0	12
Whole School	92.1	

### Headteacher Awards

- NCarle: Rayan
- Recep: Donaldson- Connie
- Recep: Ahlberg- Esmail-Rose
- Y1: Cadbury- Alexandra
- Y1: Seacole- Poppy
- Y2: O'Keeffe- Lilly-Rose
- Y2: Elgar- Adam Y
- Y3: Newton- Layla H
- Y3: Hawking- Kandis
- Y4: Lewis- Mohammed H
- Y4: Simmonds-Hannah
- Y5: Shakespeare- Musaddiq
- Y5: Bloom- Juni
- Y6: Duleep- Inaaya
- Y6: Barnardo- Neitus

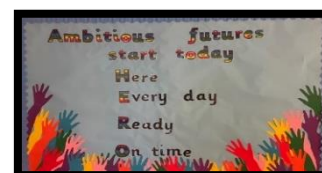
**Word of the Week**  
**perhaps**

**Meaning**  
You are not sure, but it might be true.

**Challenge**  
Count how many times people at home use the word **perhaps** in sentences. Set a family record!

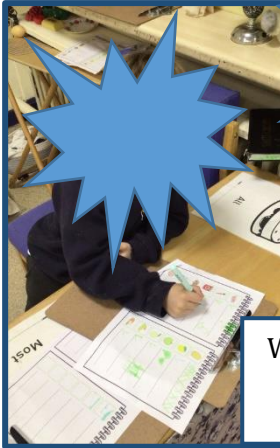
CELEBRATING WORDS

**Please be mindful late marks contribute to attendance %.**

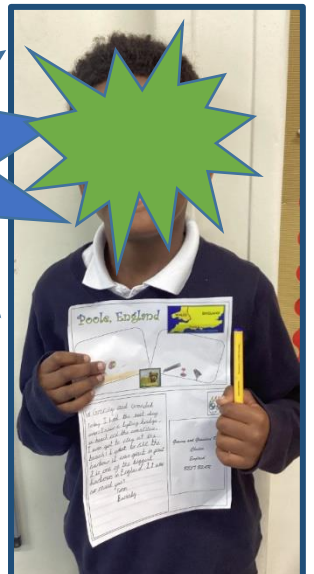


# Super Work at E.F.P.S.

Working together in Nursery



Writing shopping lists and enjoying maths in Reception



Well Done-a pen licence awarded in Y2

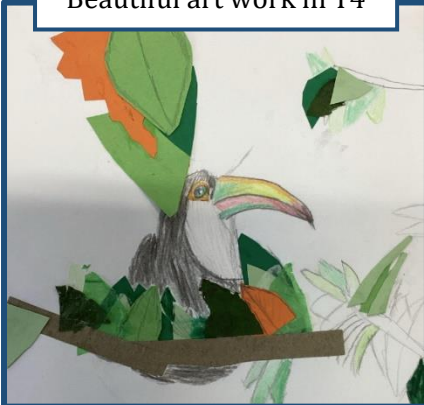
Y3 have been investigating photo frame structures



Creative Geography lessons in Y2



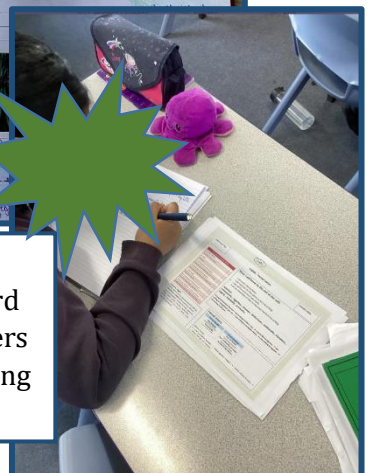
Beautiful art work in Y4



Enjoying computing in Y5



Y6 have worked hard writing letters and classifying animals



## Right of the Month... May

Article 24: (health and health services)

Every child has the right to the best possible health care



HEALTH, WATER, FOOD, ENVIRONMENT



UNICEF

### Key Dates

Key Dates	
27 <sup>th</sup> May to 31 <sup>st</sup> May	Half term
10 <sup>th</sup> June	Y4 Multiplication Checks/ Y1 Phonics Checks/ Y2 assessments
17 <sup>th</sup> -19 <sup>th</sup> June	Y2 Dodford Residential
25 <sup>th</sup> June	Sports Day: 9.15am Reception, Y1 &Y2 1.30pm Y3, Y4, Y5, Y6
26 <sup>th</sup> June	9.15am: Nursery Sports Day
4 <sup>th</sup> July	<b>Polling Day-school is closed</b>
15 <sup>th</sup> July	9am Governors' Award Assembly
19 <sup>th</sup> July	9am Y6 Leavers' Assembly Pupils' last day
4 <sup>th</sup> September	Pupils return to school for Autumn term